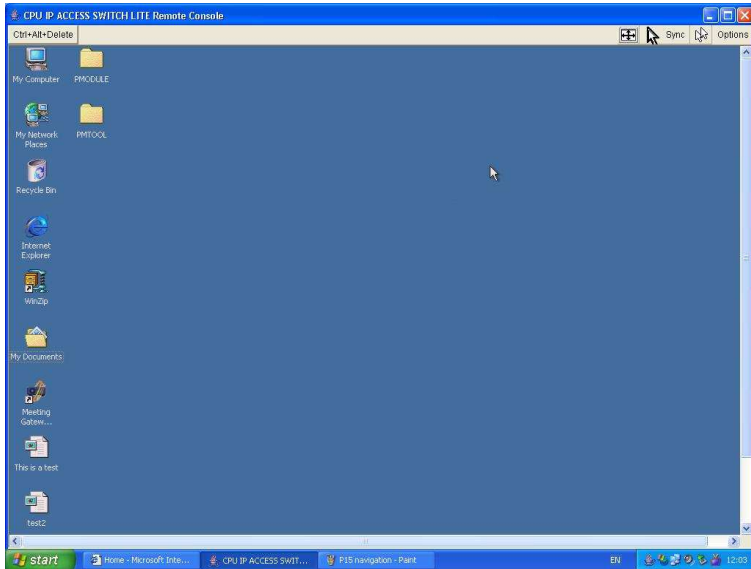


## Remote Console

Starting the Remote Console opens an additional window. It displays the screen content of your host system. The Remote Console will behave in exactly the same way as if you were sitting directly in front of the screen of your host system. However, be aware of the fact that the host system will react to keyboard and mouse actions with a slight delay.



The upper part of the Remote Console window contains a control bar. Using its elements you can see the state of the Remote Console and influence the local Remote Console settings. There are several options to choose from, below is an introduction to the most important ones. Please refer to the User Manual for further options and information.

### Auto Adjust button

If the video display is poor quality or distorted in some way, click this button and wait a few seconds while the KVM IP ACCESS MODULE adjusts itself for the best possible video quality.

### Sync mouse

Choose this option in order to synchronize the local AND remote mouse cursors. If the mouse does not synchronize, select Intelligent **Sync** from the **Mouse Handling** sub menu of the Remote Console **Option** menu.

### Video Settings (from within the Options Menu)

This opens a new window from which you can adjust brightness, contrast etc. of the displayed picture in the Remote Console window.

**Quick Installation is now complete. Refer to the full User Manual on the supplied CD for more information about the advanced features of the KVM over IP Access Module!**

## KVM IP Access Module Quick Start Guide

This Quick Start Guide provides a brief introduction to the KVM over IP ACCESS module for the LINDY U-Series KVM switches and shows you how to quickly set up the device for use. For more detailed operation instructions please consult the full User Manual on the supplied CD.

### Package Contents

- IP ACCESS Module
- RS232 Serial cable, 1.8m
- USB A to Mini-B Cable, 1m
- Software & User Manual CD
- This Quick Start Guide

### Introduction:

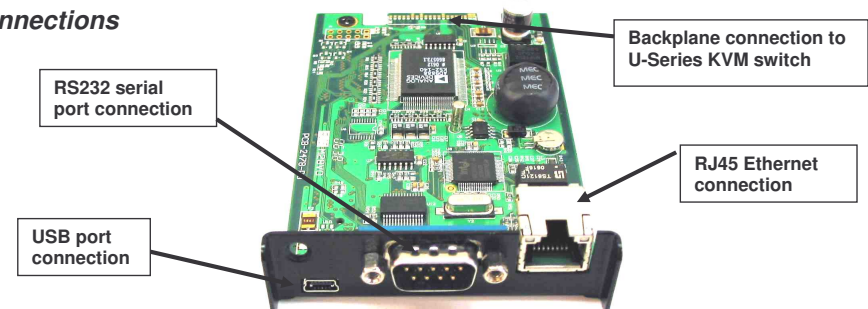
The IP access module provides remote KVM over IP access to the KVM switch U8/16. It converts all keyboard video and mouse signals and sends them as TCP/IP signals over your LAN/WAN connection. The KVM switch U8/16 may be accessed from any computer connected to your network and provides full KVM access including BIOS level access to all the connected computers. The KVM over IP Access module can be accessed via a web browser and via dedicated software tools included with the product. It uses secured encrypted sessions and password authentication.

Please note that KVM over IP does not operate in a "real time" environment and that some degree of time delay will occur due to limiting factors such as available bandwidth and network traffic.

### Installation:

Before you install the IP Access module into the KVM switch ensure all connected computers are switched off and the power supply is unplugged. Proceed to unscrew and remove the small metal cover on rear of the KVM switch. Carefully slide the module into the slot and secure in place with the screw previously removed. The spare product label with MAC address and serial number may be affixed to the KVM Switch for future reference. You may now proceed to power up all connected equipment and connect the IP module and check for correct operation.

### Connections



1. **(Optional)** If you want to use the remote mass storage control feature, use the supplied USB A to Mini-B cable to connect the USB port on the KVM IP ACCESS Module to a USB port on the host system
2. **(Optional)** Connect a modem or RS232 terminal or RS232 to the RS232 serial port connection
3. Connect an Ethernet cable to the RJ-45 Ethernet port.

## Configuration

By default, the KVM IP ACCESS MODULE will try to contact a DHCP server in the subnet to which it is physically connected. If a DHCP server is found, it will provide a valid IP address, gateway address and net mask. Before you connect the device to your local subnet, be sure to complete the corresponding configuration of your DHCP server. It is recommended to configure a fixed IP assignment to the MAC address of the KVM IP ACCESS MODULE. You can find the MAC address details on the printed label on the underside of the IP Access module.

## KVM IP ACCESS MODULE Setup Tool

Start the setup tool from the CD ROM -



On the upper left corner, the MAC address of the KVM IP ACCESS MODULE is displayed. To detect the MAC address, press the **Refresh Devices** button. The displayed MAC address should correspond to the printed address shown on the label on the base of the IP module.

On the lower right corner of the window, there are two buttons: **Query Device** and **Setup Device**. Press the **Query Device** button to display the preconfigured values of the network configuration. The values are displayed in the text fields located above. If necessary, adjust the network settings to your needs. To save the changes enter a user login and a password (the default user name is **super**, the default password is **pass**) and then press the **Setup Device** button.

## Logging In

The KVM IP ACCESS MODULE can be entirely managed using a standard web browser. You can access the KVM IP ACCESS MODULE using the insecure HTTP protocol, or using the encrypted HTTPS protocol. Whenever possible, use HTTPS.

In order to use the Remote Console window of your managed host system, the browser must feature Java Runtime Environment version 1.1 or higher support. If the browser has no Java support (such as on a small handheld device), you can still maintain your remote host system using the administration forms displayed by the browser itself.

**Important:** For optimum operation, we recommend you install the latest version of Sun's Java Virtual Machine 1.5 which can be downloaded from the following web site:

[www.java.com](http://www.java.com)

Launch your web browser. Direct it to the address of your KVM IP ACCESS MODULE.

**Example:** Type the following in the address line of your browser when establishing an unsecured connection:

**http://<IP address of KVM IP ACCESS MODULE>**

When using a secure connection, type in:

**https://<IP address of KVM IP ACCESS MODULE>**

This will lead you to the KVM IP ACCESS MODULE login page as shown below:

The KVM IP ACCESS MODULE has a built-in super user account that has all the permissions enabled to administrate your KVM IP ACCESS MODULE switch:

<b>Login name</b>	<b>super (factory default)</b>
<b>Password</b>	<b>pass (factory default)</b>

Once logged into the KVM IP ACCESS MODULE successfully, the main page appears.

To launch the Remote Console click on the **Console** icon –

